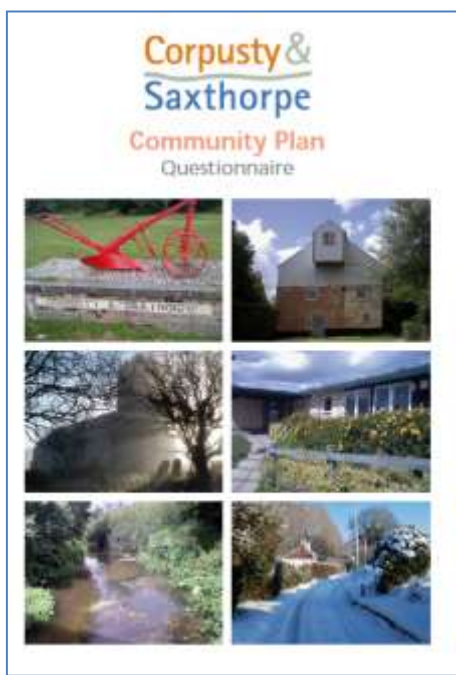


## EVIDENCE BASE

### CHAPTER 4: NEIGHBOURHOOD PLAN OBJECTIVES QUESTIONNAIRE

## Please help with our Neighbourhood Plan for Corpusty and Saxthorpe. We want your views on the outline vision for a Neighbourhood Plan.

This is the steering group's vision and outline of the Saxthorpe and Corpusty Neighbourhood Plan. After you have read it please complete the form on pages 7 and 8, the numbered sections of which relate to the sections of this outline. You can copy this form and each person in a household can return a completed copy.



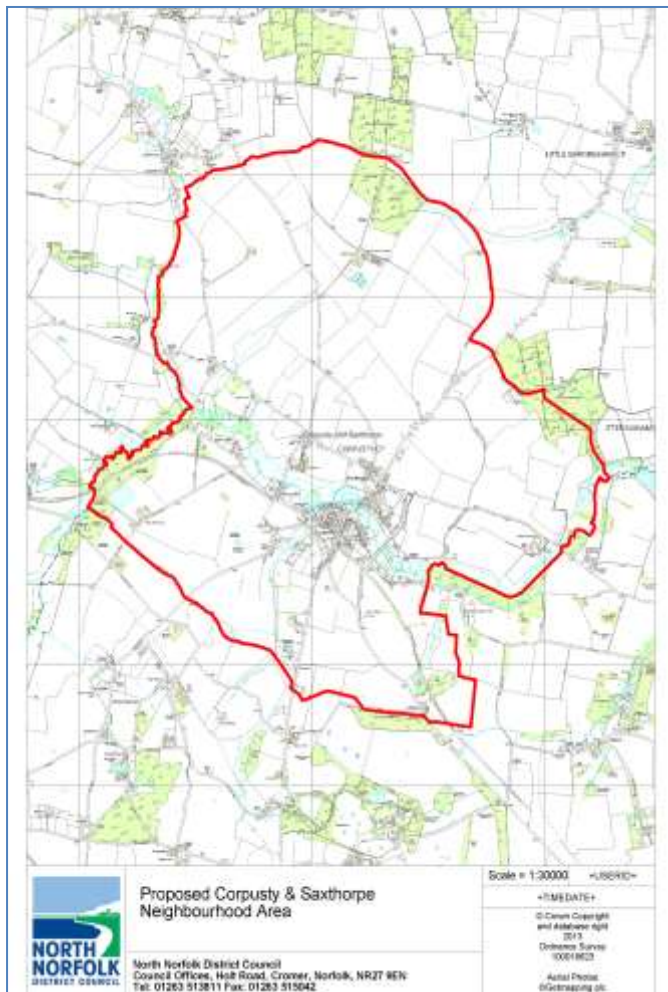
You will remember this questionnaire which resulted in the Community plan. The Neighbourhood Plan takes on these ideas and makes it into an official planning document.

## What is a Neighbourhood plan?

The Localism Act 2011 came into effect in April 2012. It gives local communities some new rights and powers to shape the development of their communities by coming together to prepare neighbourhood plans. These plans must: (a) fit in with national planning policy; (b) be in general conformity with strategic policies in the development plan for the local area (for example the North Norfolk District Council core strategy); (c) be compatible with EU obligations and human rights requirements. However, these plans DO give local communities some additional control over the look and feel of their environment and the future of their community.

Your parish council decided to take up this opportunity and the FIRST STEP toward developing a plan has been taken, and Corpusty and Saxthorpe was designated a **Neighbourhood Area** at the meeting of North Norfolk District Council Cabinet on 2 December 2013.

The Neighbourhood Planning Area is delineated by the red line on this map:



**The Parish Council has agreed the following principles:**

**The Neighbourhood Plan should aim to:**

- A) Engender a vibrant, inclusive and caring community**
- B) Enhance and not devalue the architectural and landscape character of the villages and improve the quality of the housing**
- C) Increase the number of young families**
- D) Improve support and services for an elderly population**
- E) Increase economic activity in the parish**
- F) Take account of the nature and capacity of the roads within the parish**
- G) Take account of the effect of public transport on the village.**

**The main scope of the Neighbourhood Plan considers the use and development of land and property to enable Corpusty and Saxthorpe's Plan to sit alongside and enhance the North Norfolk Local Core Strategy 2011.**

**Objectives to be consulted on**

**1 Housing**

- Explore additional areas where housing development could be considered and calculate the number and type of housing which the village**

would benefit from FOR EXAMPLE, NUMBERS OF UNITS OF SO-CALLED “AFFORDABLE” HOUSING

- Infill housing would be encouraged rather than large blocks of new housing.
- Consideration of the location of new housing would take account of the flood plain and existing infrastructure.

## **2 Environment**

- Identify types and grades of agricultural land, designation of land within the village, eg the river Bure being an Environmentally Sensitive Area.
- Identify parts of the roadside verges as nature reserves
- Identify areas of significant archaeological interest
- Identify all listed buildings and other heritage sites
- Describe acceptable types of new housing – design, size, appearance, for elderly people, starter homes

## **3 Corpusty Primary school**

- Encourage, support and protect the school as an essential pillar of the community.
- Identify development plans of the school and look to promoting development of the school buildings to cope with potential growth in school size.
- Consider plans for expansion OF THE SCHOOL AND OF OTHER EDUCATION/TRAINING OPPORTUNITIES if possible

## **4 Encourage, support and protect local businesses and facilities**

- the village shop and Post Office
- and other local businesses such as the pub, the gallery,

- and all the builders, decorators, crafts workers, joiners, plumbers, electricians, engineers, mechanics &c &c who operate from the village
- the village hall and the play areas as *essential pillars of the community*

## **5 Support changes necessary to maintain vitality and viability of local businesses**

- Explore the urgent installation of ultra fast broad band internet
- Explore other ways of supporting business e.g. a village website?
- Explore the need for residential accommodation for the elderly
- Encourage local craft and light industry subject to impact on neighbours
- Discourage industrial activities which involve the movement of heavy vehicles within the village, or which require multiple vehicle movements

## **6 Support the role of St. Andrew's Church at the heart of the Parish's spiritual, cultural and community life.**

- Support sensitive changes to its furnishings to enable it to fulfil its role better but without doing harm to its architectural or historic importance.
- Look for uses for St. Peter's church which would enhance village life and not conflict with existing facilities

## **7 Sport, leisure and communal facilities**

- Maintain the appearance and upkeep of the village green
- Encourage the healthy activities of all inhabitants by keeping access to the countryside open on footpaths
- Monitor the footpaths and encourage landlords to keep footpaths in good condition
- Consider a multi-use games area (MUGA)
- Encourage the restoration and updating of children's play equipment
- Encourage the upkeep of allotments

## **8 Agriculture and Food production**

- Encourage existing and new agriculture and horticultural business

- Support diversification
- Seek new uses for existing farm buildings
- Support local food production including orchards and small holdings
- Discourage the loss of productive agricultural land to semi industrial uses such as energy production

## **9 Transport and rights of way.**

- Identify dangerous areas of roads and look to improve safety
- Enquire about traffic calming schemes within the village
- Look to improve transport facilities either by public transport or community volunteer schemes

## **10 Green issues**

- Explore ways of promoting green and renewable energy sources by encouraging micro generation and the use of solar panels on existing farm and industrial buildings
- Discourage the use of productive agricultural land for energy generation
- Encourage schemes for insulating properties



**5. Support changes necessary to maintain vitality and viability of local businesses**

**6. Support the role of St. Andrew's Church**

**7. Sport, leisure and communal facilities**

**8. Agriculture and Food production**

**9. Transport and rights of way**

**10. Green issues**



**11. ANY OTHER POINTS YOU WOULD LIKE TO WRITE ABOUT**

If you would like to know more about the Neighbourhood Plan or become involved please contact Imogen Waterson, the chair of the steering committee, on email :[imogen.waterson@btinternet.com](mailto:imogen.waterson@btinternet.com) OR phone her on 01263 587610

## NEIGHBOURHOOD PLAN ONLINE CONSULTATION RE OBJECTIVES APRIL-MAY 2014

The screenshot shows a web browser window displaying the North Norfolk Council Consultation Portal. The page title is "Corpusty & Saxthorpe Neighbourhood Plan - Issues & Options Survey". The main content area contains a heading "YOUR CHANCE TO INFORM THE NEIGHBOURHOOD PLAN FOR CORPUSTY & SAXTHORPE" and a paragraph explaining the purpose of the plan. Below this, there is a section titled "The event is not currently available for consultation" with tabs for "Event Information", "Supporting Documents", and "All Comments". A search bar is present above a table of comments. The table has columns for "View Comment", "Classification Filter", "Comment", "Agent", "Response Date", and "Add to PDF". Three comments are listed, all with the classification "Corpusty & Saxthorpe Neighbourhood Plan - Issues & Options Survey". The response dates are 12/05/14 18:39, 17/04/14 16:45, and 11/04/14 15:21. The page footer includes a disclaimer: "North Norfolk Council engagement portal uses cookies. Some may have been set already. For more information see our privacy policy." and a "Log out the cookies" button.

View Comment	Classification Filter	Comment	Agent	Response Date	Add to PDF
	Corpusty & Saxthorpe Neighbourhood Plan - Issues & Options Survey			12/05/14 18:39	<input type="checkbox"/>
	Corpusty & Saxthorpe Neighbourhood Plan - Issues & Options Survey			17/04/14 16:45	<input type="checkbox"/>
	Corpusty & Saxthorpe Neighbourhood Plan - Issues & Options Survey			11/04/14 15:21	<input type="checkbox"/>

Three responses were received from this on-line consultation. This supplemented the paper based consultation above which used the same questionnaire.

NEWSPAPER REPORT OF INTENTION TO PROCEED WITH NEIGHBOURHOOD PLAN IN CORPUSTY & SAXTHORPE 4 SEPTEMBER 2013

**Eastern Daily Press**

Search...

Home News Sport Business Going Out Features Your Town Opinion Property

Crime Politics Health - Education - Jobs Environment Tech Tourism Nostalgia Obituaries Weather Video

Get the **LATEST** articles delivered direct to your email inbox! SIGN UP to our **FREE**

### Your chance to influence planning in Holt, Corpusty and Saxthorpe

15:04 04 September 2013

Most Read

- 1
- 2
- 3
- 4