

North Norfolk District Council
Ryburgh Neighbourhood Plan Referendum
Information Statement

A Public Referendum on the Ryburgh Neighbourhood Development Plan will be held on **Thursday 6th May 2021**. This statement provides information on the Referendum that is taking place, and the Neighbourhood Plan it relates to.

This statement provides information about:

- The Referendum Question and date;
- Who Can Vote;
- The Specified Documents;
- The Neighbourhood Area and Referendum Area;
- Referendum Expenses;
- Further Information.

The Referendum will be held in tandem with the Norfolk County Council Local Elections, and, the deferred Norfolk Police & Crime Commissioner Election. The Referendum will be conducted in accordance with procedures similar to those used at local government elections.

The Referendum Question

A Referendum asks you to vote 'yes' or 'no' to a question. For this Referendum you will receive a ballot paper which asks the following question:

'Do you want North Norfolk District Council to use the Neighbourhood Plan for Ryburgh to help it decide planning applications in the Neighbourhood Area?'

The Neighbourhood Area

The Neighbourhood Area for Ryburgh is as shown at the end of this document. The boundary of the Neighbourhood Area was approved by North Norfolk District Council in April 2017 and covers the entirety of the parish of Ryburgh.

The Referendum Area is identical to the area which has been designated as the Ryburgh Neighbourhood Area. The independent examiner concluded that the area was entirely appropriate for the purpose of this Neighbourhood Plan.

...Continued.

Who Can Vote

A person is entitled to vote in the Referendum if on Thursday 6^h May 2021:

- They are entitled to vote in a local government election in the Referendum area; and,
- Their qualifying address for the election is in the Referendum area. A persons qualifying address is, in relation to a person registered in the register of electors, the address in which they are entitled to be registered.

If more than 50% of individuals vote 'yes' in the Referendum, then North Norfolk District Council will formally 'make' the Ryburgh Neighbourhood Development Plan. If the Neighbourhood Plan is 'made' it will form part of the statutory Development Plan for North Norfolk and help to determine planning applications within the Neighbourhood Plan Area.

If more people vote 'no' than 'yes' then the Neighbourhood Plan will not be "made" and will not be part of the statutory Development Plan for North Norfolk.

The Specified Documents

A number of documents that are available to view as part of the Referendum:

- The Referendum Version of the Ryburgh Neighbourhood Development Plan (Draft Plan);
- The independent examiner's report on the Ryburgh Neighbourhood Development Plan;
- The representations submitted to the independent examiner following consultation on the Submitted Plan;
- A Decision Statement from the Local Planning Authority which confirms the Draft Neighbourhood Plan (Referendum Version) meets the basic conditions and other legislative requirements. It also confirms that the Neighbourhood Plan can proceed to Referendum;
- A statement that sets out general information in respect of town and country planning, which includes neighbourhood planning and the Referendum;
- Map of the Ryburgh Neighbourhood Plan Area.

The Referendum will be conducted in accordance with procedures similar to those used at local government elections.

The specified documents are available for public viewing at www.north-norfolk.gov.uk/ryburghnp. The documents may also be inspected during normal opening hours at North Norfolk District Council Offices, Holt Road, Cromer, NR27 9EN (a pre-booked appointment may be necessary under Covid-19 restrictions applying at the time, which can be made by calling 01263 513811).

Reference copies are also available from Ryburgh Parish Council.

...Continued.

Referendum Expenses

The Referendum expenses limit in relation to the Referendum is £2,395.58 which has been calculated on the basis of 576 electors as of 01/03/2021.

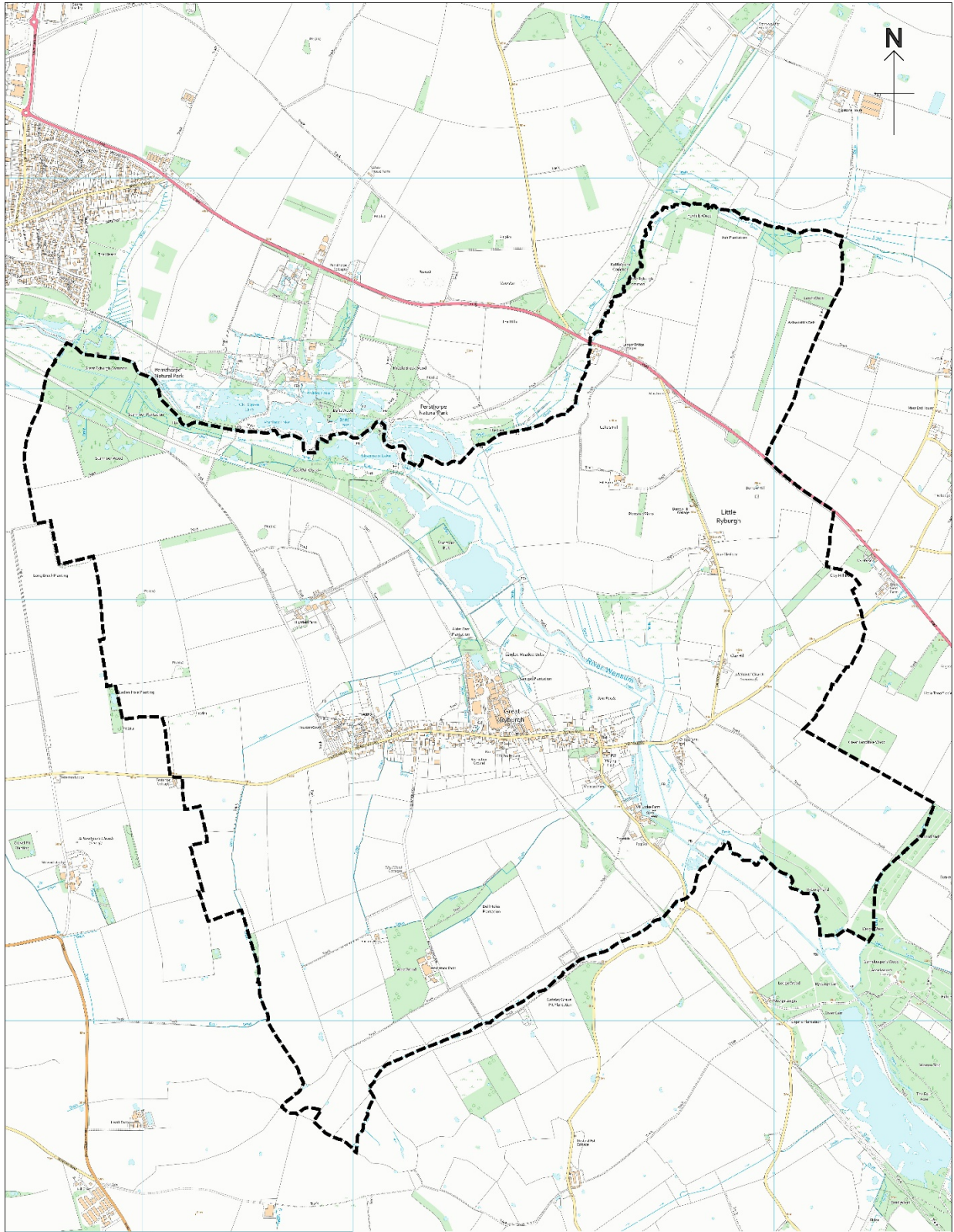
Further Information

- Further general information on neighbourhood planning, documents relating to the Ryburgh Neighbourhood Plan and other emerging Neighbourhood Plans can be found at www.north-norfolk.gov.uk/neighbourhoodplans
- For queries about planning policy and neighbourhood planning in general, please contact planningpolicy@north-norfolk.gov.uk
- For queries about voting and the Referendum arrangements please contact the Electoral Services Team: elections@north-norfolk.gov.uk | 01263 516046

Referendum Area - see map on the following page.

...Continued.

The Referendum Area



Ryburgh Neighbourhood Area (RNA)

 Ryburgh Neighbourhood Area

North Norfolk District Council
Council Offices, Holt Road, Cromer, Norfolk, NR27 9EN
Tel: 01263 513811 Fax: 01263 515042

NOT TO SCALE

CB

23/01/2020

© Crown Copyright
and database right
2020
Ordnance Survey
100018623

Aerial Photos
©Getmapping plc