

North Norfolk Open Space Assessment



NORTH
NORFOLK
DISTRICT
COUNCIL

Appendices

(Final Version, February 2020)

Ecology | Green Space | Community | GIS
Studio 12a | Greenway Farm | Wick | BS30 5RL

info@ethosep.co.uk | 0333 0112854

www.ethosep.co.uk



Contents

Appendix 1 Example: Open Space Provision by Parish	1
Appendix 2 Example: Access Map by Typology & Parish	3
2.1. Amenity Green Space Access Map Example	4
2.2. Allotment Access Map Example	5
2.3. Accessible Natural Greenspace Access Map Example	6
2.4. Accessible Natural Greenspace (20ha+) Within 2KM Access Map Example	7
2.3. Accessible Natural Greenspace (100ha+) Within 5KM Access Map Example	8
2.4. Accessible Natural Greenspace (500ha+) Within 10KM Access Map Example	9
2.3. Park & Recreation Grounds (& Accessible Private Sport) Access Map Example	10
2.4. Play (Child) Access Map Example	11
2.3. Play (Youth) Access Map Example	12
Appendix 3 Example: Quality Audit Maps by Parish	13
Appendix 4: Example Application of Open Space Standards (North Walsham)	15

Note

Appendix 1 to 3 contains **example maps** relating to Alby with Thwaite Parish. Due to the number and size of the map files it is not possible to host them directly on a website.

If you require access to a particular map, please contact the case officer dealing with your planning application. Alternatively please email your request to planningpolicy@north-norfolk.gov.uk or call 01263 516318.

North Norfolk Open Space Assessment



NORTH
NORFOLK
DISTRICT
COUNCIL

Appendix 1

Open Space Provision by Parish

(Final Version, February 2020)

Ecology | Green Space | Community | GIS
Studio 12a | Greenway Farm | Wick | BS30 5RL

info@ethosep.co.uk | 0333 0112854

www.ethosep.co.uk



Alby with Thwaite Open Space Provision Map

- Key**
- Parish boundary
 - Accessible Natural Greenspace
 - Cemeteries and Churchyards
 - Education

EXAMPLE MAP

To obtain maps for specific parish areas please contact the relevant case officer for your planning application or enquiry. Alternatively, please email planningpolicy@north-norfolk.gov.uk or call 01263 516318.

North Norfolk Open Space Assessment



NORTH
NORFOLK
DISTRICT
COUNCIL

Appendix 2

Access Maps by Typology & Parish

(Final Version, February 2020)

Ecology | Green Space | Community | GIS
Studio 12a | Greenway Farm | Wick | BS30 5RL

info@ethosep.co.uk | 0333 0112854

www.ethosep.co.uk



Alby with Thwaite Amenity Greenspace Access Map

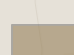
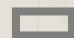

- Key**
- Parish boundary
 - Census 2011 Output Area Centroids

EXAMPLE MAP

To obtain maps for specific parish areas please contact the relevant case officer for your planning application or enquiry. Alternatively, please email planningpolicy@north-norfolk.gov.uk or call 01263 516318.

Alby with Thwaite Allotment Access Map

Key

-  Walking buffers: 15mins
-  Parish boundary
-  Census 2011 Output Area Centroids

EXAMPLE MAP

To obtain maps for specific parish areas please contact the relevant case officer for your planning application or enquiry. Alternatively, please email planningpolicy@north-norfolk.gov.uk or call 01263 516318.



Alby with Thwaite Accessible Natural Greenspace Access Map

- Key**
- Accessible Natural Greenspace
 - Linear buffers: 960m
 - Parish boundary
 - Census 2011 Output Area Centroids

EXAMPLE MAP

To obtain maps for specific parish areas please contact the relevant case officer for your planning application or enquiry. Alternatively, please email planningpolicy@north-norfolk.gov.uk or call 01263 516318.



Alby with Thwaite Accessible Natural Greenspace (20ha+) Access Map

- Key**
- Parish boundary
 - Census 2011 Output Area Centroids

EXAMPLE MAP

To obtain maps for specific parish areas please contact the relevant case officer for your planning application or enquiry. Alternatively, please email planningpolicy@north-norfolk.gov.uk or call 01263 516318.

Alby with Thwaite Accessible Natural Greenspace (100ha+) Access Map

- Key**
- Linear buffers:
5km
 - Parish boundary
 - Census 2011
Output Area
Centroids

EXAMPLE MAP

To obtain maps for specific parish areas please contact the relevant case officer for your planning application or enquiry. Alternatively, please email planningpolicy@north-norfolk.gov.uk or call 01263 516318.



Alby with Thwaite Accessible Natural Greenspace (500ha+) Access Map

- Key**
- Parish boundary
 - Census 2011 Output Area Centroids

EXAMPLE MAP

To obtain maps for specific parish areas please contact the relevant case officer for your planning application or enquiry. Alternatively, please email planningpolicy@north-norfolk.gov.uk or call 01263 516318.

Alby with Thwaite Park and Recreation Grounds (and Accessible Private Sport) Access Map

- Key**
- Park & Recreation Ground walking buffers: 12mins
 - Parish boundary
 - Census 2011 Output Area Centroids

EXAMPLE MAP

To obtain maps for specific parish areas please contact the relevant case officer for your planning application or enquiry. Alternatively, please email planningpolicy@north-norfolk.gov.uk or call 01263 516318.

Alby with Thwaite Play (Child) Access Map

- Key**
- Walking buffers: 10mins
 - Parish boundary
 - Census 2011 Output Area Centroids

EXAMPLE MAP

To obtain maps for specific parish areas please contact the relevant case officer for your planning application or enquiry. Alternatively, please email planningpolicy@north-norfolk.gov.uk or call 01263 516318.

Alby with Thwaite Play (Youth) Access Map

- Key**
- Walking buffers:
15mins
 - Parish boundary
 - Census 2011
Output Area
Centroids

EXAMPLE MAP

To obtain maps for specific parish areas please contact the relevant case officer for your planning application or enquiry. Alternatively, please email planningpolicy@north-norfolk.gov.uk or call 01263 516318.

North Norfolk Open Space Assessment



NORTH
NORFOLK
DISTRICT
COUNCIL

Appendix 3

Quality Audit Maps by Parish

(Final Version, February 2020)

Ecology | Green Space | Community | GIS
Studio 12a | Greenway Farm | Wick | BS30 5RL

info@ethosep.co.uk | 0333 0112854

www.ethosep.co.uk

Alby with Thwaite Quality Audit Map

- Key**
- Parish boundary
 - Accessible Natural Greenspace
 - Open Space Grade
 - A

EXAMPLE MAP

To obtain maps for specific parish areas please contact the relevant case officer for your planning application or enquiry. Alternatively, please email planningpolicy@north-norfolk.gov.uk or call 01263 516318.

North Norfolk Open Space Assessment



NORTH
NORFOLK
DISTRICT
COUNCIL

Appendix 4

Example Application of Open Space Standards: North Walsham

(Final Version, February 2020)

Ecology | Green Space | Community | GIS
Studio 12a | Greenway Farm | Wick | BS30 5RL

info@ethosep.co.uk | 0333 0112854

www.ethosep.co.uk

Appendix 4: Example application of open space standards - North Walsham

1. Overview

This document provides an example of how the new open space standards (for quantity, accessibility and quality) for North Norfolk can be applied. It considers two allocated sites (NW01/B and NW62) in the parish of North Walsham.

Figure 1 provides an overview of the existing open space provision in North Walsham, and Figure 2 shows the locations of the allocated sites. The new quantity and accessibility standards for open space are summarised in Table 1.

Section 2 sets out the process of applying the open space standards and recommendations for allocation NW01/B, and Section 3 follows the same format for allocation NW62.

Figure 1 Existing provision of open space within North Walsham parish

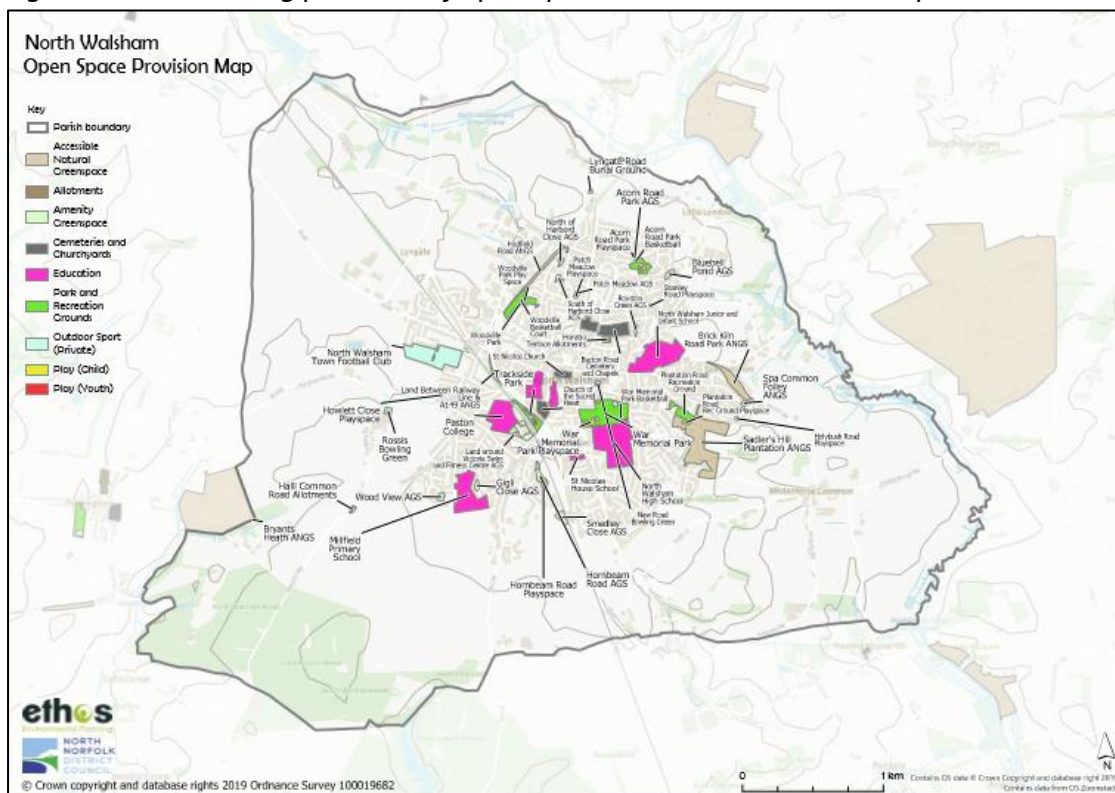


Figure 2 Allocations NW01/B and NW62 and existing open space

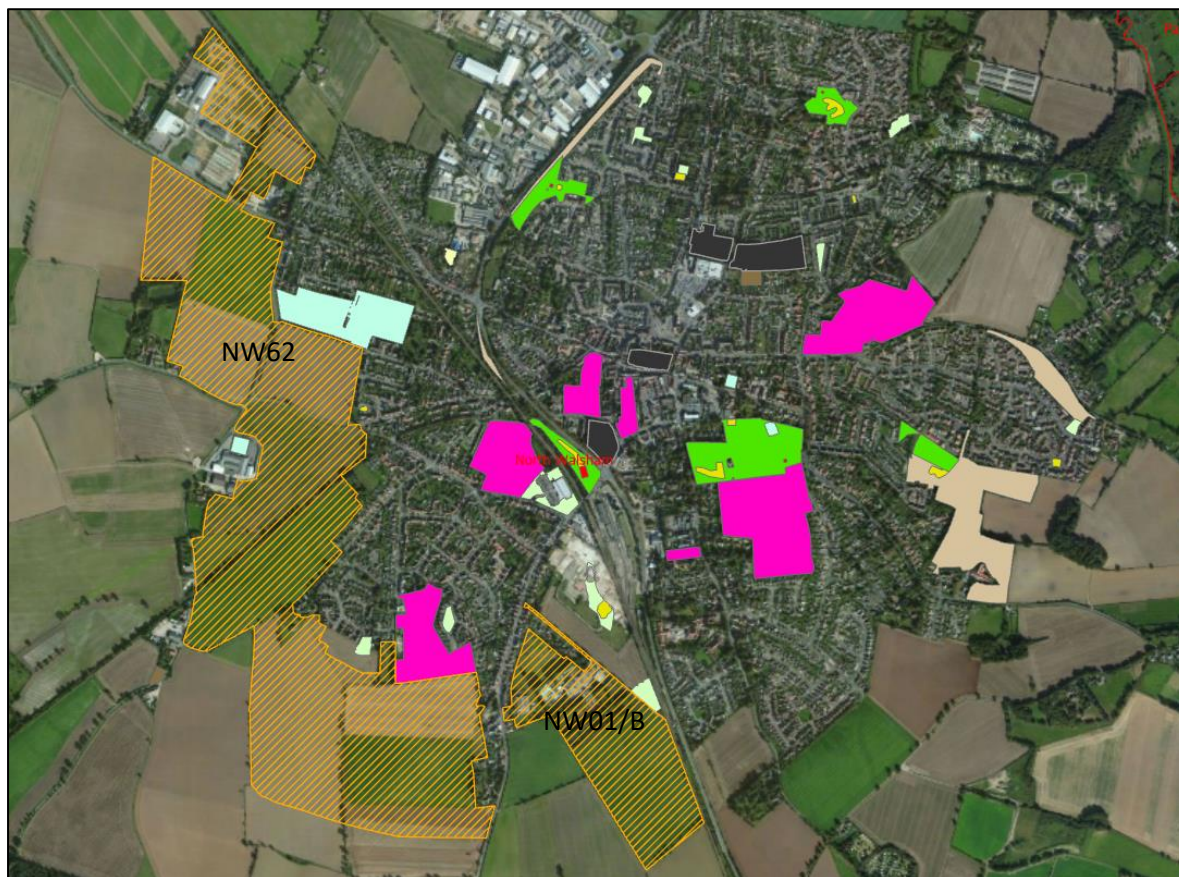



Table 1 Summary of new open space quantity and access standards

Typology	Quantity standards for existing provision and new provision (ha/1000 population)	Access standard
Allotments	0.60	15 minutes' walk-time
Amenity Green Space (sites >0.15 ha)	1.0	10 minutes' walk time
Park and Recreation Grounds	1.1	12-13 minutes' walk time
Play Space (Children)	0.10	10 minutes' walk-time
Play Space (Youth)	0.06	15 minutes' walk-time
Natural Green Space	1.5 (for new provision only)	20 minutes' walk-time and ANGSt Standards
Total for new provision	4.36 ha/1000	

2. Allocation NW01/B: 350 dwellings

Mixed-Use: Land at Norwich Road and Nursery Drive

Site Reference	NW01/B (including NW05, NW06/1 (part), NW07, NW30)	
Site Address	Land at Norwich Road & Nursery Drive	
Site Area	18.62 hectares (gross)	
Proposal		
<p>Mixed-use allocation including residential development of approximately 350 dwellings, the retention and enhancement of 2 hectares of existing employment land and provision of 3 hectares of public open space.</p>		

2.1 Open space quantity requirements

Assuming an average size of 2.3 persons/household, the development could generate $350 \times 2.3 = 805$ persons.

In terms of the quantity standards, the open space requirements are as follows:

Table 2 Open space requirements for NW01/B

	a	b	a x b
Open Space Typology	Population (k)	Standard (ha/1000)	Requirement (ha)
Allotment	0.805	0.6	0.483
Amenity Greenspace	0.805	1.0	0.805
Parks and Recreation Grounds	0.805	1.1	0.885
Play (Children)	0.805	0.1	0.080
Play (Youth)	0.805	0.06	0.048
Accessible Natural Greenspace	0.805	1.5	1.207

2.2 Consideration of existing supply of open space within the vicinity of the proposal

The development falls within the parish of North Walsham, of which there are existing shortfalls in all typologies of open space against the open space quantity standards (as summarised in Table 1 above), as follows:

Table 3 Existing supply (ha) of open space in North Walsham parish

Parish	Allotments	Amenity Greenspace	Parks and Recreation Grounds (combined)	Play (Child)	Play (Youth)
North Walsham	-7.20	-9.75	-5.14	-0.17	-0.67

2.3 Consideration of existing access to open space within the vicinity of the proposal

Figure 3 Access to open space



2.4 Consideration of quality of existing open space within North Walsham parish

The quality audit undertaken by Ethos during 2019 assessed five open spaces as being of average quality within the parish (all other open spaces were assessed as being of good quality). These are as follows (with the overall recommendations for improvements from the audit):

- Trackside Park and Recreation Ground. Recommendations for improvements: Remove graffiti, improve children's play area.
- Sadler's Hill Plantation ANGS. Recommendations for improvements: Install welcome/wildlife information signs at key entrances, stop motorcycle access into woodland, improve paths.
- Brick Kiln Road Park ANGS. Recommendations for improvements: Install wildlife information signs and benches.
- Hadfield Road ANGS. Recommendations for improvements: Clear litter.
- North Harboard Close AGS. Recommendations for improvements: Add litter bin and benches, opportunity to plant trees.

2.5 Recommendations for open space requirements for NW01/B

Due to the size of the development and considering the existing shortfalls in supply and the gaps in access, all typologies of open space would be expected to be provided on site, in accordance with the minimum requirements set out in Table 2, and summarised below:

- Allotments: 0.483ha
- Amenity green space: 0.805ha
- Parks and recreation grounds: 0.885ha
- Children's play space: 0.080ha
- Youth play space: 0.048ha
- Accessible natural green space: 1.207ha

Total: 3.508ha

Consideration should be given to combining the amenity green space and accessible natural green space requirements, to provide bigger, better more joined up spaces, in accordance with the NPPF.

Considering the above, it would not be appropriate to consider off-site improvements i.e. contributions to improve existing open spaces, as all open space provision should be on site.

3. Allocation NW62: 1,800 dwellings

Mixed-Use: North Walsham Western Extension

Site Reference	NW62
Site Address	North Walsham Western Extension
Site Area	95 hectares

Proposal

Mixed-use development of approximately 1,800 dwellings, including the delivery of a link road between Norwich and Cromer Road, associated supporting infrastructure including a new primary school, significant areas of public open space and green infrastructure and approximately 7 hectares of employment provision. The final mix, quantity and distribution of land uses to be subject to the production and approval of a comprehensive Development Brief.



3.1 Open space quantity requirements

Assuming an average size of 2.3 persons/household, the development could generate 1800 x 2.3 = 4,140 persons.

In terms of the quantity standards, the open space requirements are as follows:

Table 5 Open space requirements for NW62

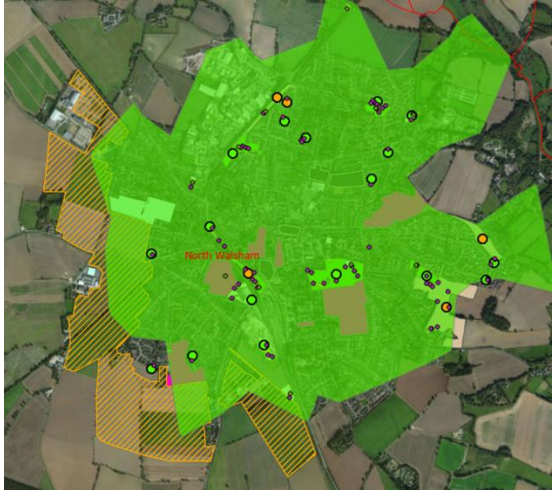
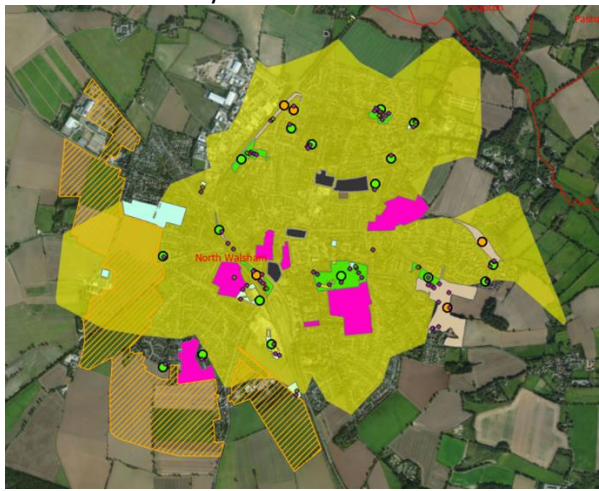
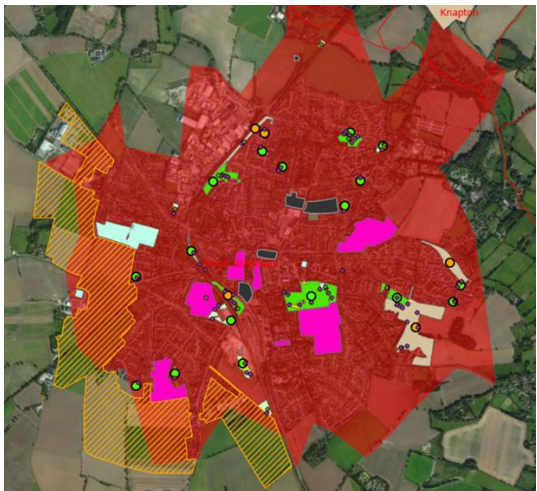
	a	b	a x b
Open Space Typology	Population (k)	Standard (ha/1000)	Requirement (ha)
Allotment	4.140	0.6	2.484
Amenity Greenspace	4.140	1.0	4.140
Parks and Recreation Grounds	4.140	1.1	4.554
Play (Children)	4.140	0.1	0.414
Play (Youth)	4.140	0.06	0.248
Accessible Natural Greenspace	4.140	1.5	6.21

3.2 Consideration of existing supply of open space within the vicinity of the proposal:

The development falls within the parish of North Walsham, of which there are existing shortfalls in all typologies of open space against the open space quantity standards (as shown in Table 3, Section 2.2).

3.3 Consideration of existing access to open space within the vicinity of the proposal

Figure 3 Access to open space

<p>Access to amenity green space (10 minutes walk time): Limited access in small parts of the fringes of the allocated site only.</p> 	<p>Access to parks and recreation grounds (13 minutes' walk time): Limited access in eastern fringes of the allocated site only.</p> 
<p>Access to children's play space (10 minutes walk time): Limited access in the middle part of the allocated site only.</p> 	<p>Access to youth play space (15 minutes walk time): Access to approximately half of the allocated site.</p> 
<p>Access to natural green space (960m straight line): Access in the northern half of the allocated site, however access is to only very small, linear ANGS.</p>	<p>Access to allotments (15 minutes walk time): Limited access in the middle area of the allocated site only.</p>



3.4 Consideration of quality of existing open space within North Walsham parish

The quality audit undertaken by Ethos during 2019 assessed five open spaces as being of average quality within the parish (all other open spaces were assessed as being of good quality). These are identified in Section 2.4 above.

3.5 Recommendations for open space requirements for NW62:

Due to the size of the development and considering the existing shortfalls in supply and the large gaps in access, all typologies of open space would be expected to be provided on site, in accordance with the minimum requirements set out in Table 5, and summarised below:

- Allotments: 2.484ha
- Amenity green space: 4.140ha
- Parks and recreation grounds: 4.554ha
- Children’s play space: 0.414ha
- Youth play space: 0.248ha
- Accessible natural green space: 6.21ha

Total: 18.05ha

Consideration should be given to combining the amenity green space and accessible natural green space requirements, to provide bigger, better more joined up spaces, in accordance with the NPPF.

Considering the above, it would not be appropriate to deliver off-site improvements, as all open space provision should be on site.